



SERVICE BULLETIN 34T-06-320-01

Contact: Mike Hankins, Director of Customer Relations
Mainship Corporation
mhankins@mainship.com

February 14, 2006

Models Affected: 34 Trawler – Hulls GM101 through GM197

It has come to our attention that the swim platform on the 34 Trawler may not be properly secured to the hull. The purpose of this bulletin is to provide proper direction on how to secure the platform to the stanchions and the hull.

The current configuration may allow fasteners to loosen. Re-securing the platform by this procedure will ensure that the platform and the stanchions are secured correctly. The necessary hardware needed for this modification will be shipped to you.

The authorized time for repairs is 4 hours. These repairs should be completed when the boat is hauled for annual service and bottom painting. New units that have not been launched should have the procedure performed before launching. Those units that are out for winter storage should also have the procedure performed before spring launching.

Hulls GM172 and higher have the stanchions thru-bolted to the platform.

Please contact Customer Service should you have any questions.
Thank you for your assistance.

Mike Hankins
(912) 880-2116
(800) 578-0852

Safety: Safety Glasses

Step 1: Tape a double layer of tape around stanchion foot on transom. Be sure to cover all paint. Remove stanchion from transom and platform. Grind **only** area on transom in between tape to remove excess 5200 sealant and paint. This will ensure a better mating surface when attaching stanchions.

Note: Remove only 1 stanchion at a time.

Step 2: The screw holes on the transom need to be re-drilled using a ¼ drill bit (go completely through transom and through hull pad on the inside). The screw holes on the underside of the swim platform need to be re-drilled using a 5/16- drill bit (go completely through swim platform).

Note: To avoid ripping hull pad when drilling, hold a wood block firmly in place over hull pad and drill through wood block.

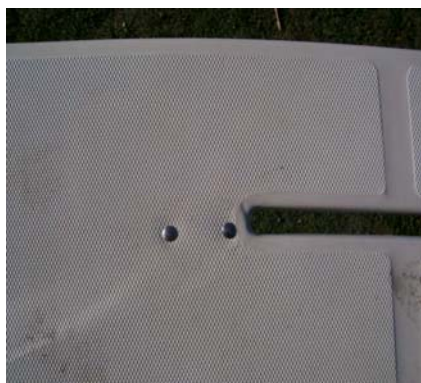


Step 3: Cover the bottom foot of the stanchion with 5200 sealant and put into place on the transom. Install using ¼ x 20 x 3 pan head screws with a ¼ flat washer.

Safety: Safety Glasses



Step 4: In the aft engine compartment, tighten screws in place using a 1/4 fender washer and a 1/4 nylock nut. Clean excess sealant.



Step 5: On the top foot of the stanchion, cover with 5200 sealant. From the top, install a 5/16 x 2 1/2 carriage bolt.



Step 6: Tighten carriage bolts in place using a 5/16 flat washer and a 5/16-nylock nut. Break off remaining screw and clean excess sealant

Note: Follow these steps for remaining stanchions.